

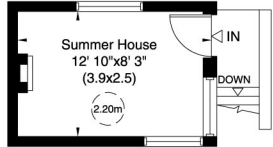
# Hampstead Way, NW11

Approximate Gross Internal Area

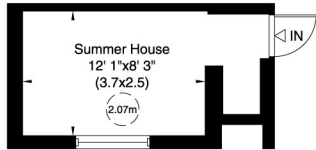
450 sq m/ 4843 sq ft Including Under 1.5m, loft, Garage and Summer House

328 sq m/ 3527 sq ft Excluding Under 1.5m, Loft, Garage and Summer House

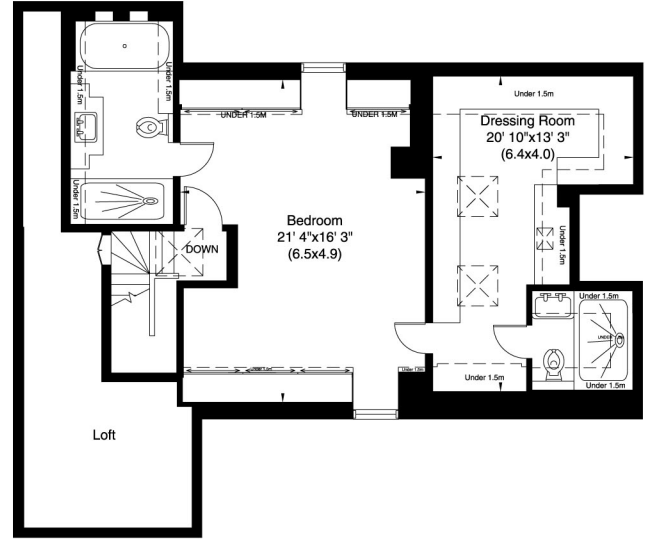
Not to Scale, for identification only



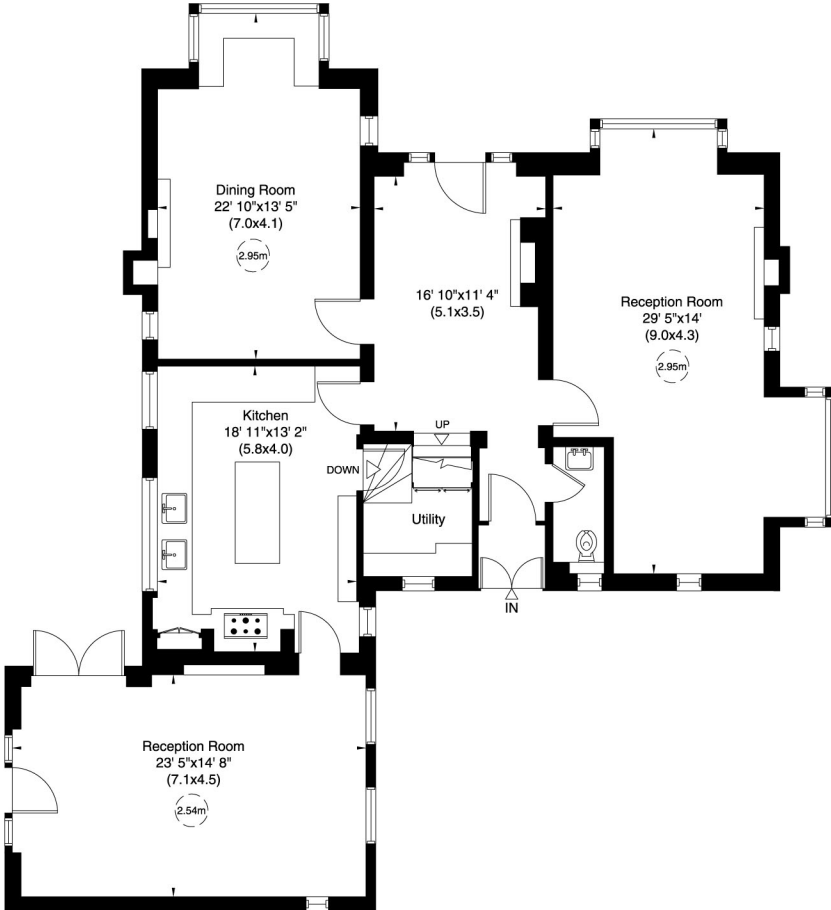
First Floor



Ground Floor



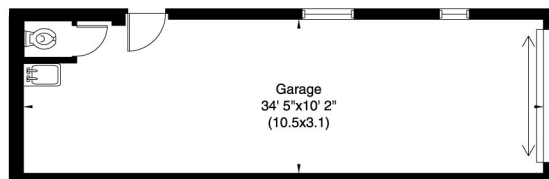
Second Floor



Ground Floor



First Floor



Ground Floor

For guidance only and must not be relied upon as a statement of fact.  
All measurements and areas are approximate only (and have been prepared in accordance with the current edition of the RICS Code of Measuring Practice).



# Hampstead Way, NW11

Approximate Site Plan  
0.2156566 Acre (approx.)

Not to Scale, for identification only

